

Intexmo®



WetCast
Solutions >>

The right polyurethane
for your product



45 Shore



60 Shore



80 Shore

Polyurethane moulds
for high dimensional stability



With skin around the mould



Overlip for the perfect fitting in the carrier

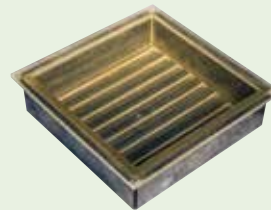


Mould protection

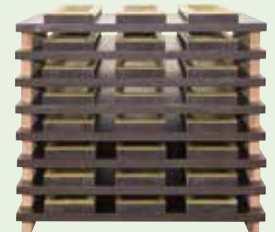
For perfect
series production



wooden carrier



steel carrier



wooden frames screwed on production boards

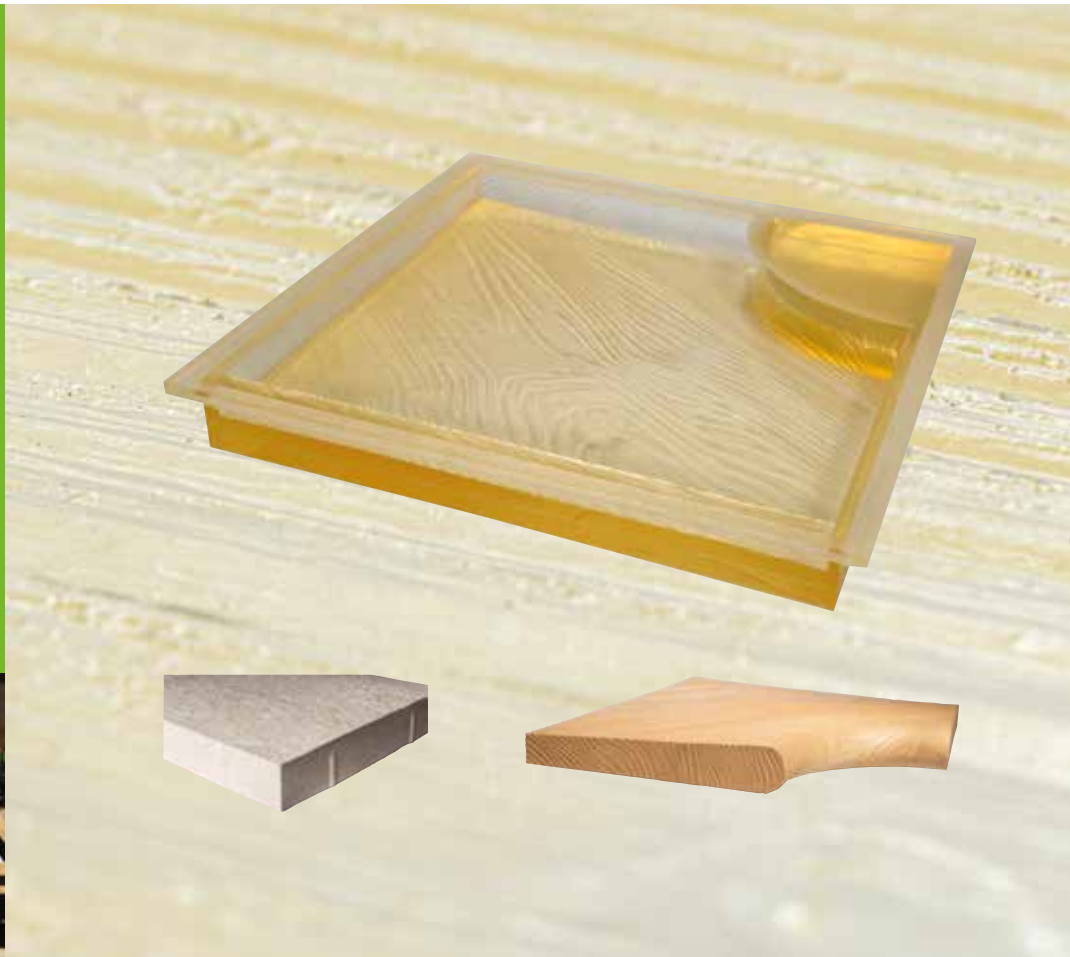
best quality

The polyurethane we use for our moulds is the result of a continuous development with a renowned German manufacturer. It guarantees the highest quality in the production of WetCast products.

- » highly extensible – extremely durable
- » high dimensional stability – high dimensional accuracy
- » easy demoulding – smooth production process
- » high abrasion resistance – long lifetime, low production cost

In-house modeling department

We produce the models from your samples, e.g. natural stone or wooden structure. The models are manufactured on state-of-the-art CNC machines using the latest technology in the milling process.

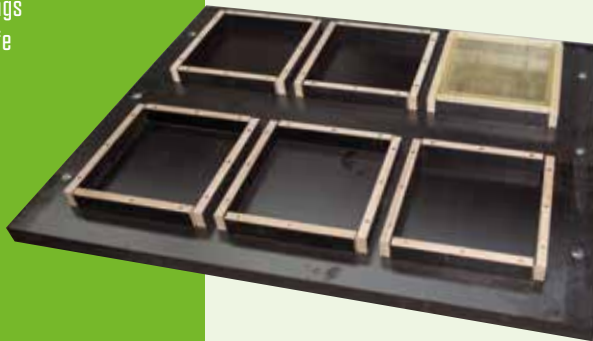


efficient production

Intexmo® offers complete WetCast solutions for an efficient production process. High quality and extremely resilient wooden boards, from renowned manufacturers, guarantee the highest quality – combined with **Intexmo®** stacking feet and **Intexmo®** support frames, the result is a proven and efficient production unit. The in-house assembly of the frames for the polyurethane moulds on the base boards with exact positioning ensures a simply and fast production process on all common automatic WetCast machines.

Three decisive arguments for a high-quality wooden board:

- » minimal deflection - exact stone products
- » low dead weight - energy savings
- » coated boards - long service life



Intexmo®

perfect stones

The competence for
the perfect stone



The perfect stone - from a single source

With **Intexmo®** polyurethane moulds, concrete admixtures and release agents from Rhein-Chemotechnik and color pigments from Scholz, you can fall back on high-quality products and competent expert knowledge.

We support you in the realization of new developments as well as in the optimization of existing WetCast stone productions. Contact us.

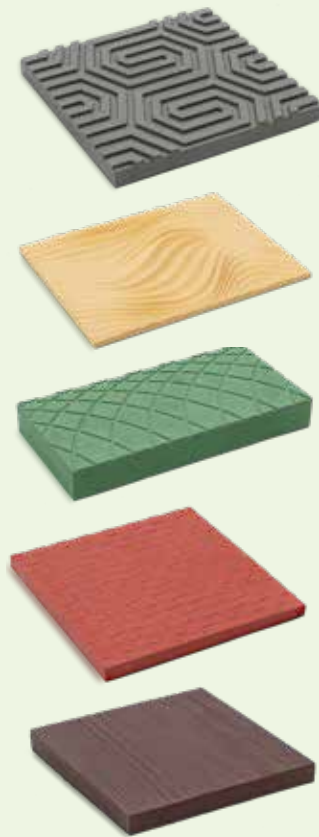


Colour pigments, metering solutions and know-how for over 120 years. All pigment forms and the right dosing system for your products.



Rhein-Chemotechnik GmbH | Concrete chemistry at the highest level since 1966. Concrete admixtures, surface protection products, concrete release agents, products for cleaning and maintenance of plants, gritting granules and dosing systems. Everything from a single source.

Intexmo® Polyurethane moulds built according to your ideas and imagination in our own model making workshop for large serial production.



Intexmo®

In order to implement innovations in polyurethane moulds, a high degree of experience and technological know-how is a prerequisite. This is the basis for high production reliability in your concrete production. See us as your competent about WetCast solutions.

- » WetCast moulds for the garden and landscape products (stone collections, wall stones, coping stones and steps)
- » WetCast moulds for urban development (tactile systems, bus curbstones and street furniture)
- » WetCast moulds for wall cladding etc.



Intexmo® GmbH
Nobelstraße 37
89584 Ehingen
Germany

Phone +49 7391 75260-00
info@intexmo.com
www.intexmo.com